



E-Skylight, Inc.

**Skylight
Installation & Maintenance
Manual
For
Factory Assembled Ridge Skylights**

**E-Skylight, Inc.
PO Box 830
Branford, CT 06405
Tel. (866) 624-3759
Fax. (207) 636-8004
www.e-skylight.com**

IMPORTANT NOTICE:

**PLEASE READ THE ASSEMBLY
INSTRUCTIONS THOROUGHLY PRIOR TO
BEGINNING SKYLIGHT INSTALLATION.
FAILURE TO COMPLY WITH ALL
ASSEMBLY INSTRUCTIONS AND
PROCEDURES WILL VOID THE WARRANTY
AND MAY RESULT IN PERSONAL INJURY
OR DEATH.**

Table of Contents:

	Page #
General Installation Guidelines	4
General Notes	4
Safety	4
Material Storage	4
Material Handling	5
Job Site	5
Weather Conditions	5
Tools Required	6
Materials Not Included	6
E-Skylight Components	7
Base Plates / Sills	7
Rafters / Purlins	8
Hips / Ridges	9
Caps / Closures / Misc.	10
Hardware	11
Exploded View of Typical Double Pitch	13
Step By Step Assembly Procedure	14
Jamb Flashing Condition	21
List of Appendicies	22

General Installation Guidelines:

General Notes:

1. Please familiarize yourself with your shop drawings prior to receiving your skylight and have your shop drawings (8.5" x 11" details included with your order) available when installing your skylight.
2. The hardware referenced in this manual is also referenced in your detail package. Please be sure to use the correct fasteners and sealants to insure quick and easy assembly and to insure proper performance of your skylight.
3. Actual components on your skylight may vary based upon the skylight size and design. See detailed shop drawings for actual extrusions and hardware used on your skylight. Components which may vary are referred in the installation instructions as well as the piece mark drawings as "xxx" components. For example, a sill extrusion referred to as "Sxxx" on assembly diagrams may be a S201, S401 or S501 depending on the specific requirements for your skylight and are clearly marked on your shop drawings.

Safety:

Skylight installation generally involves working on a roof near an opening in the roof, and is therefore inherently dangerous. There are risks of personal injury to oneself by falling, or to others on the ground by falling material, tools, or supplies. Before attempting any skylight installation obtain all personal safety protection equipment in accordance with OSHA guidelines. Whenever working on the roof you must always tie off using this equipment to ensure your personal safety. Always wear a full-length shirt, pants, gloves, and hardhat to protect against the potential of cuts from sharp edges of metal or glass.

Material Storage:

Material should be kept at a convenient but, safe distance from the roof opening and on a flat secure surface. This is a safety issue as you can lose your balance stepping on or over poorly located materials. Materials not stored on a flat and secure surface can easily fall off the roof causing a safety risk to you and others.

Material Handling:

Handling of skylight materials is a safety concern. It is important to have sufficient personnel, and or equipment available to handle the skylight components. For example, the aluminum frame components can be long, heavy, and awkward for movement by only one person. They can also have sharp edges from machining. Glass requires special equipment for safe handling due to its weight and fragility. Glazing cups should be used to move or set all glass. For larger pieces, those exceeding 15 square feet, a crane or other lifting device is recommended. When installing pre-assembled units a crane is strongly recommended. See GANA manual (Appendix "B") for other suggested equipment.

Job Site:

For a safe and efficient skylight installation, tools and materials must be kept in neat order. Packaging materials, used rags, tools, hardware etc., should all be promptly and properly disposed of to ensure personal safety, the safety of others and to protect against roof punctures or skylight damage.

Weather Conditions:

Weather conditions have an important impact on the safety and effectiveness of your skylight installation. Do not attempt a skylight installation under adverse weather conditions:

Tools Required:

Safety Glasses
Chalk Line
Drill and Drill Bits (Std, Phillips & Square)
Wrenches
Pop Rivet Gun
Electric Screw Gun
Caulking Tools
Utility Knife
Glass Scraper
Claw Hammer

Framing Square
Socket Set
Tape Measure
Caulking Gun (10.3 oz tubes)
Electric Drill
Rubber Mallet
Level, Transit
Sheet Metal Snips
Glass Cups
Pry Bar

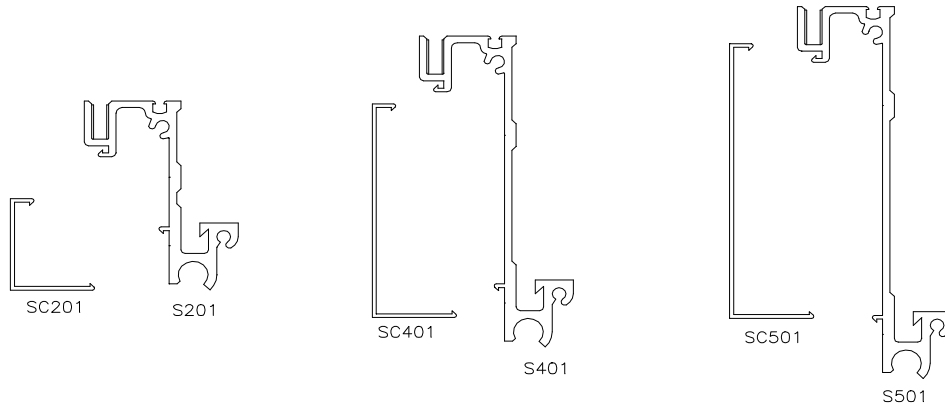
Materials Not Included With Skylight:

Curb Construction/Material
Rags/Cleaning Towels
Masking Tape

Roofing Material
Glass Cleaner
Isopropyl Alcohol

E-SKYLIGHT COMPONENTS

(Sills and Base plates)



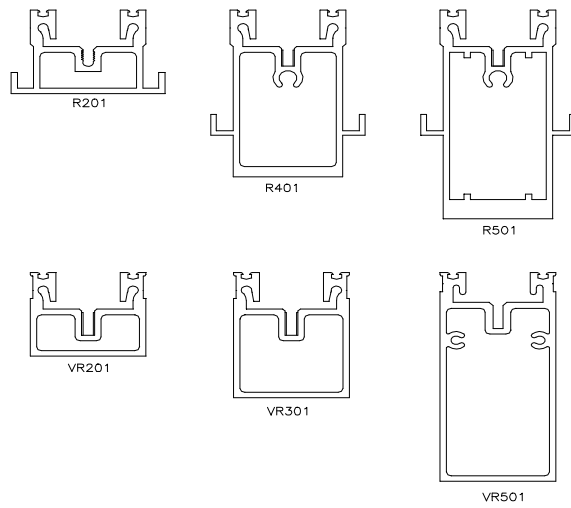
SILLS / SILL COVERS



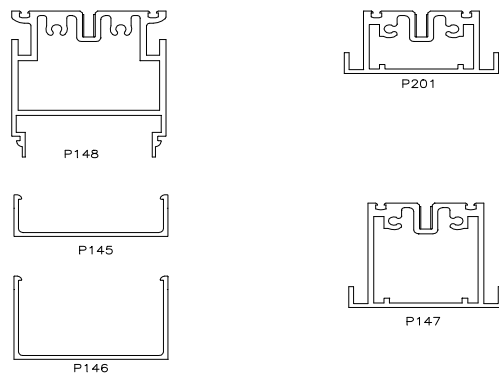
BASE PLATES

E-SKYLIGHT COMPONENTS

(Rafters, Mullions and Purlins)



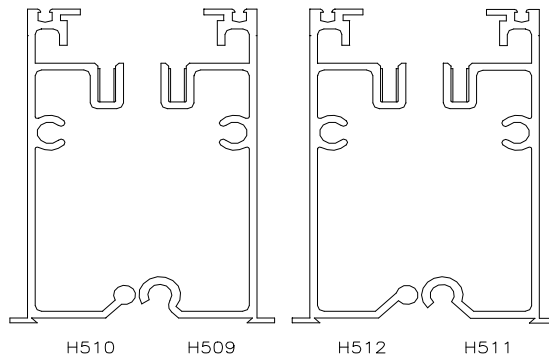
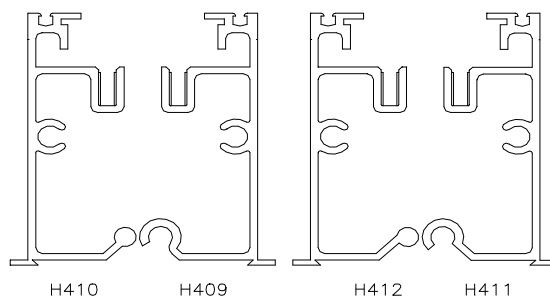
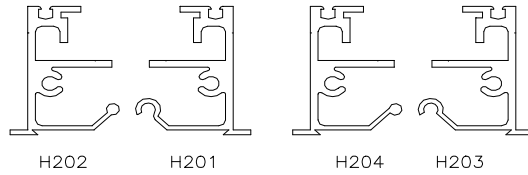
RAFTERS / MULLIONS



PURLINS

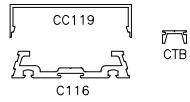
E-SKYLIGHT COMPONENTS

(Hip Rafters and Ridges)

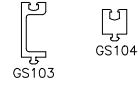


HIPS / RIDGES

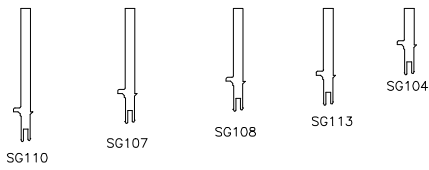
E-SKYLIGHT COMPONENTS (Miscellaneous Extrusions)



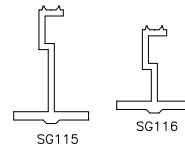
CAPS / CLOSURES



ADAPTORS

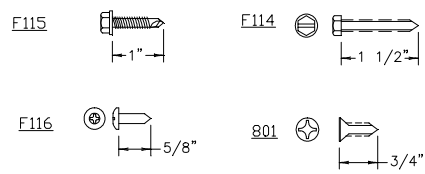
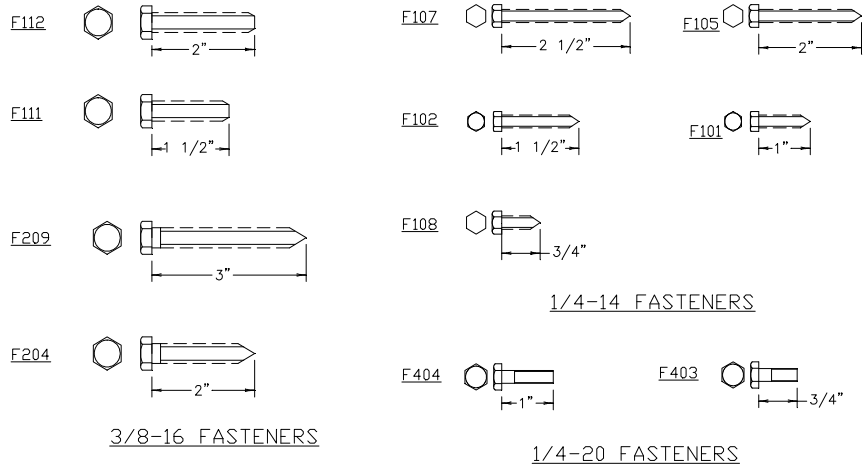


GLAZING SUPPORTS

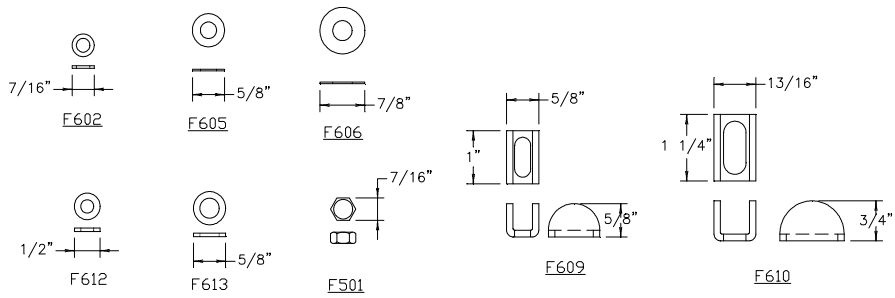


CAP STEMS

E-SKYLIGHT COMPONENTS (Hardware)

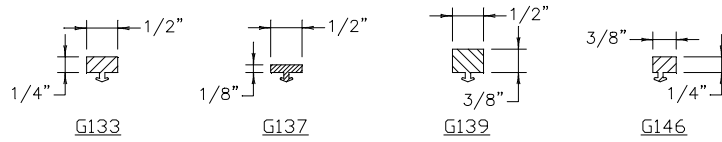


MISC FASTENERS

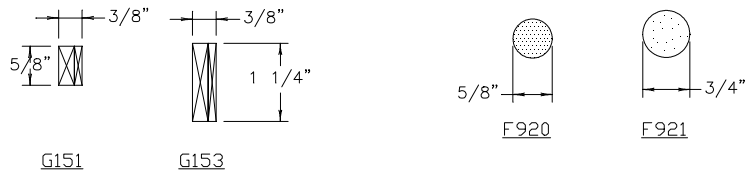


WASHERS AND NUTS

E-SKYLIGHT COMPONENTS (Hardware)

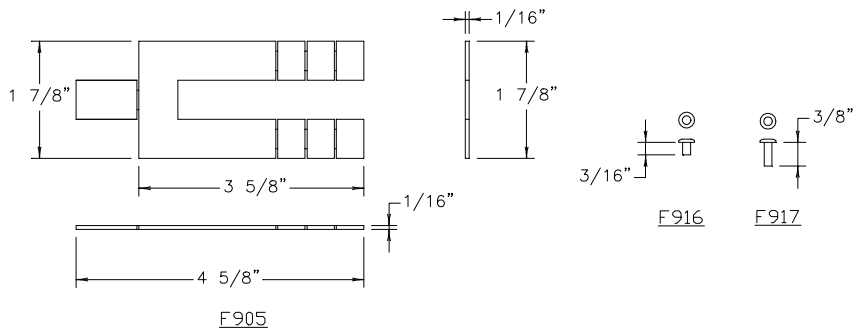


GASKETS



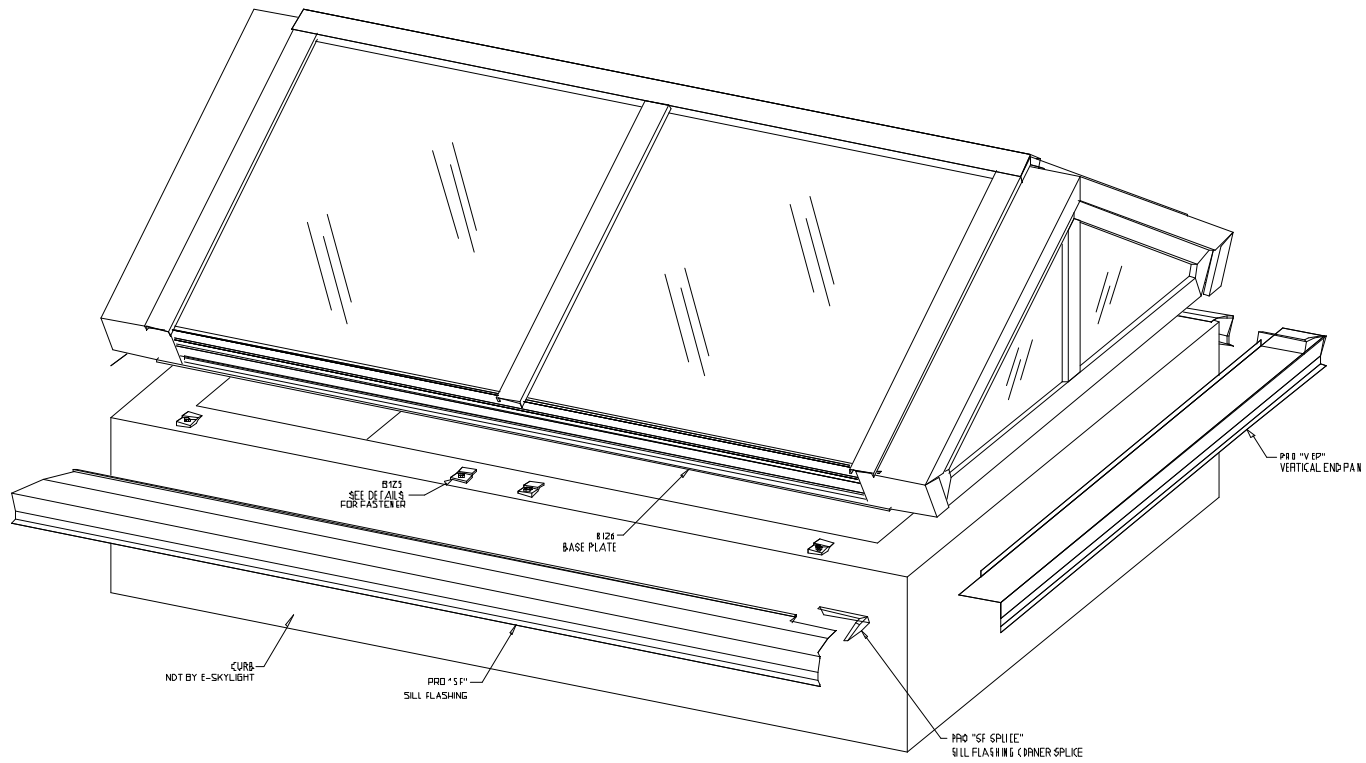
GLASS SETTING BLOCKS

BACKER RODS



SHIM

POP RIVETS



Exploded View of Factory Assembled Ridge

Step by step Assembly Procedure:

STEP #1: Curb Layout

The curb construction must be verified as sufficient to withstand the design loads imposed by the skylight and weather conditions. Please note that the standard design loads are listed on detail pages of your shop drawing set. E-Skylight.com, Inc. cannot be held responsible for the installation of a skylight on a curb that does not meet or exceed these design criteria. This verification by the skylight purchaser and installer with the curb manufacturer is essential to ensure proper installation as an under designed curb is a safety and performance problem.

The curb must be accurately measured for proper dimensions, squareness, and levelness prior to installation. This is required to ensure ease and accuracy of installation as well as future performance. Measure the actual curb dimensions to determine if your skylight will fit or if the curb will require modifications. Check the diagonal measurements of the curb for squareness. Use a laser level or a transit to locate the "high spot" on the curb. The shimming of all points of attachment are based on the difference in elevation from this point. Note that shimming cannot exceed 1/2", so curbs with a variation in excess of this amount must be modified prior to attaching the skylight.

1. Measure curb dimensions prior to beginning installation. Check dimensions of finished curb for level as well as dimensional accuracy. Curb must be within 1/2"± of level and perimeter dimensions must be within 1/8"± of specified curb dimensions (See Diagram #1 & Shop Drawings).

2. Check diagonal dimensions of curb. This should be done at the outside to outside points of the finished curb "out to out of curb" (see Diagram #1).

IMPORTANT NOTE:

Diagonal dimensions must be equal for skylight to fit properly!!!

$$\text{Diagonal Dim (c): } c^2 = a^2 + b^2$$

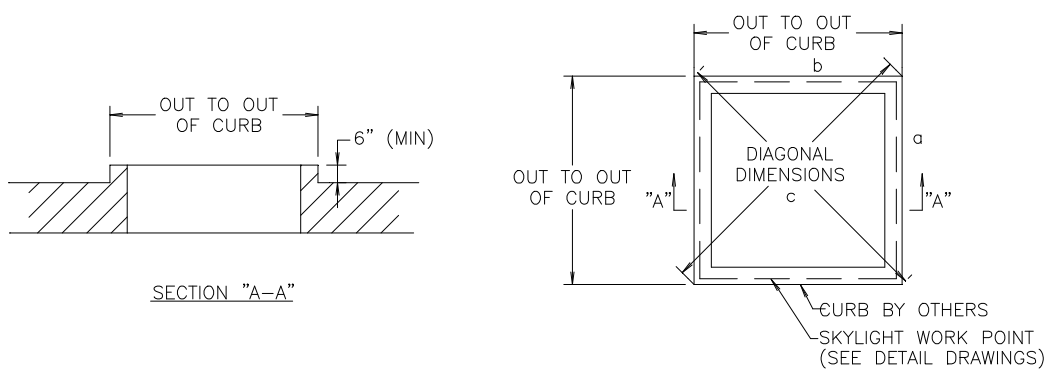


Diagram #1 – Checking curb for Square

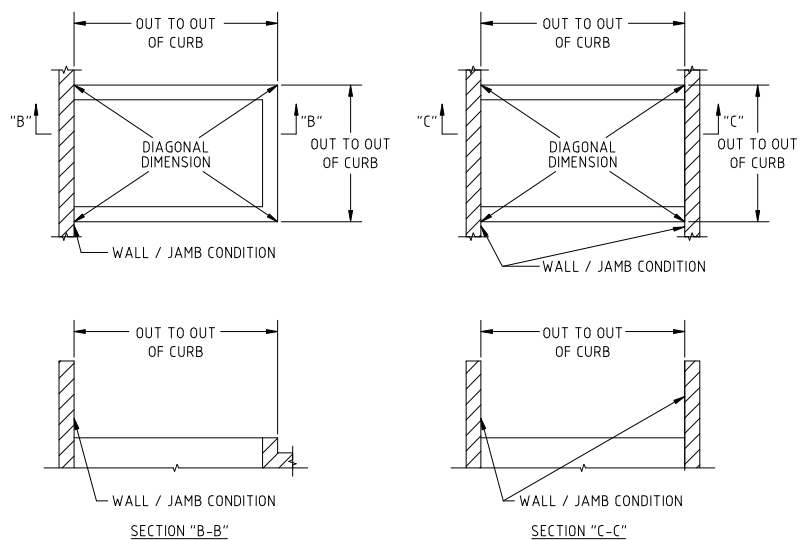


Diagram #1B – Checking curb for Accuracy (Jamb Condition)

STEP #2: Anchoring Skylight to Curb

Remove the skylight and anchoring hardware from the packaging materials. **Reuse the anchor components (B125) on the roof curb. Do Not Use the Wood Shipping Curb as part of the permanent installation.** The skylight is anchored to the curb by attaching the base plate clips (B125) to the curb with the fasteners provided (see Diagram #2 thru 2B). Note: do not tighten fasteners at this time. Leave $\frac{1}{4}$ "± so clips can be rotated to the side for clearance.

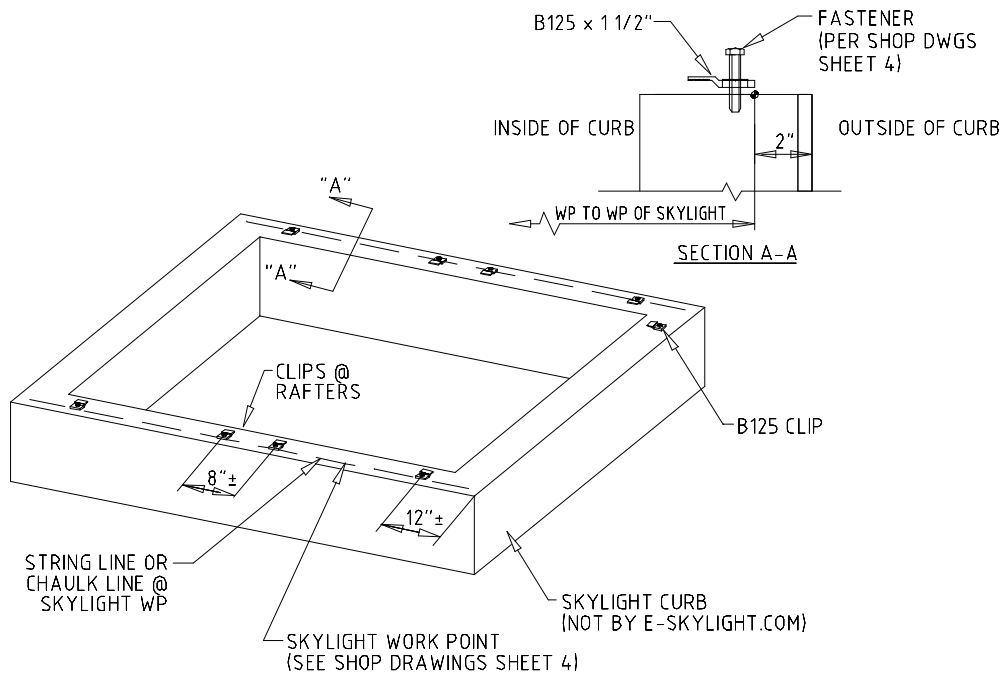


Diagram #2 – Attaching base plate clips

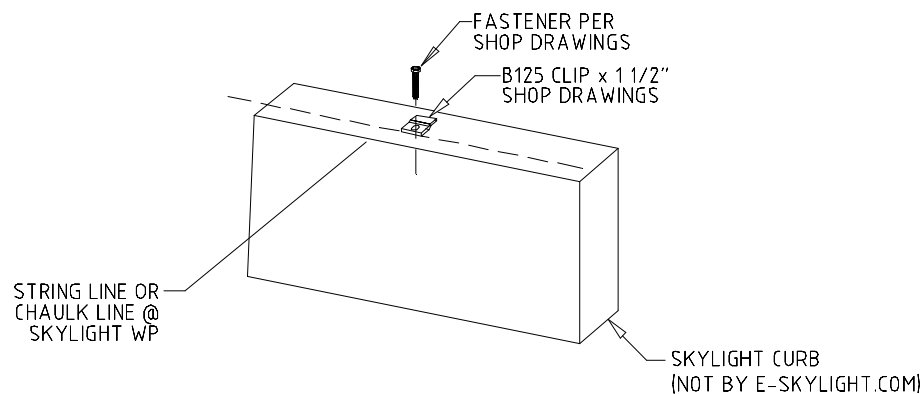


Diagram #2A – Attaching base plate clips

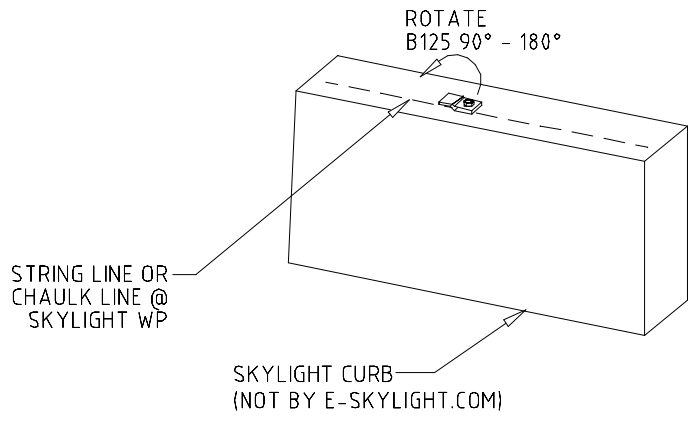


Diagram #2B – Rotating base plate clips

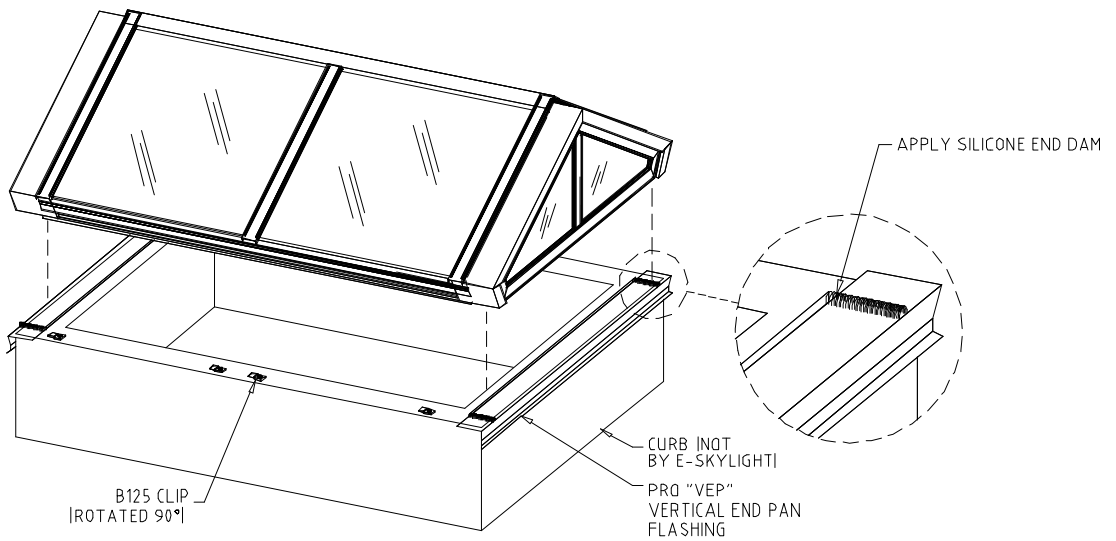


Diagram #3 – Setting pre-assembled skylight in place

STEP #3: Securing Skylight to Curb

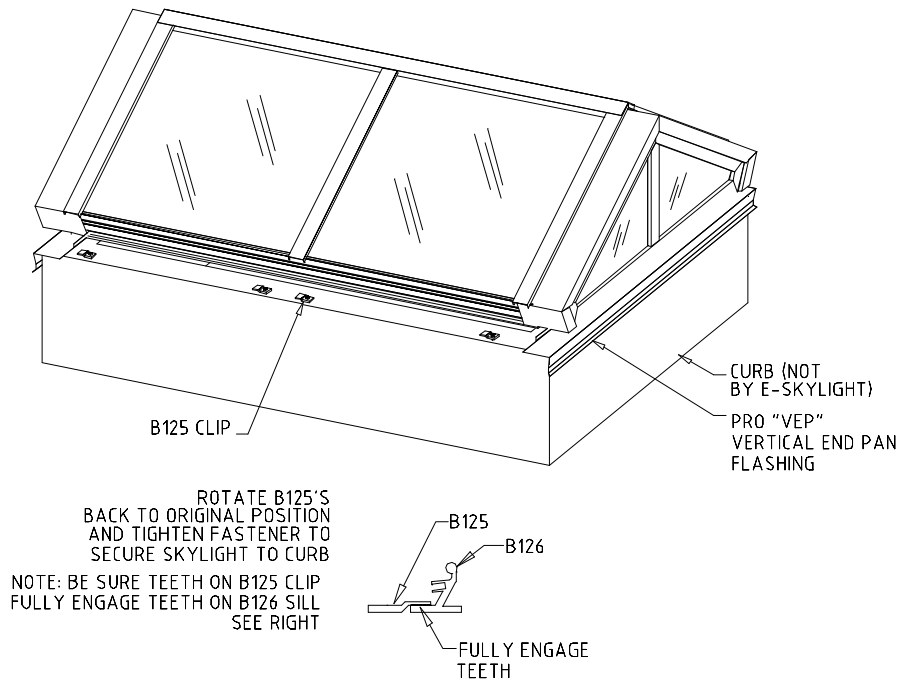


Diagram #4 – Securing skylight to curb

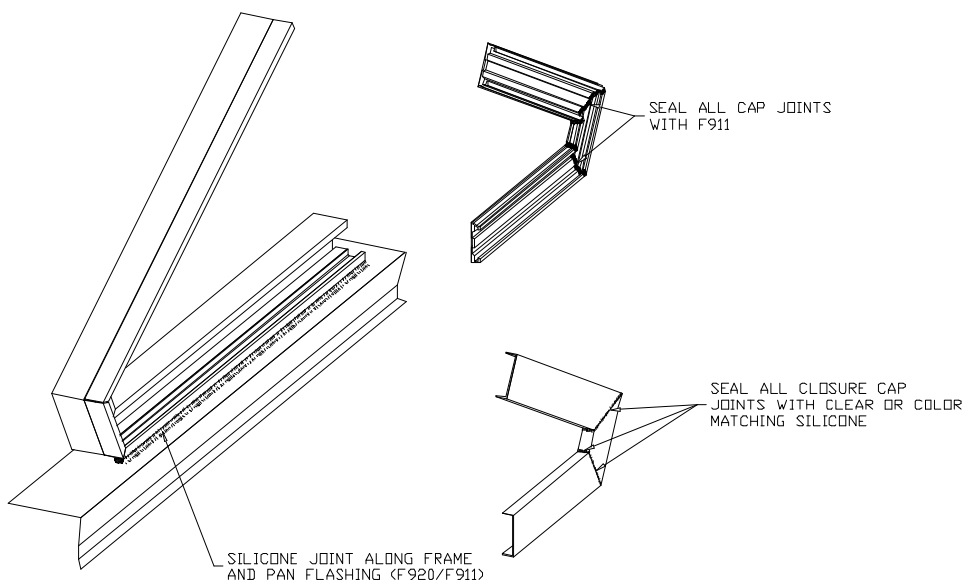


Diagram #4A – Sealing Vertical End Frame and Caps

Before cap and closure caps are applied. Insert Backer Rod (F920), leave ¼” deep pocket, and apply a silicone joint along the bottom of the Vertical End Assembly and Pan flashing. Next, install the cap (C116) and seal all joinery and apply a wet seal to cap. Now apply closure caps (CC119) and seal all joints with clear or color matching silicone.

STEP #4: Flashing

Note: Remove all protective plastic coatings from finished face of metal flashings prior to installation of flashing.

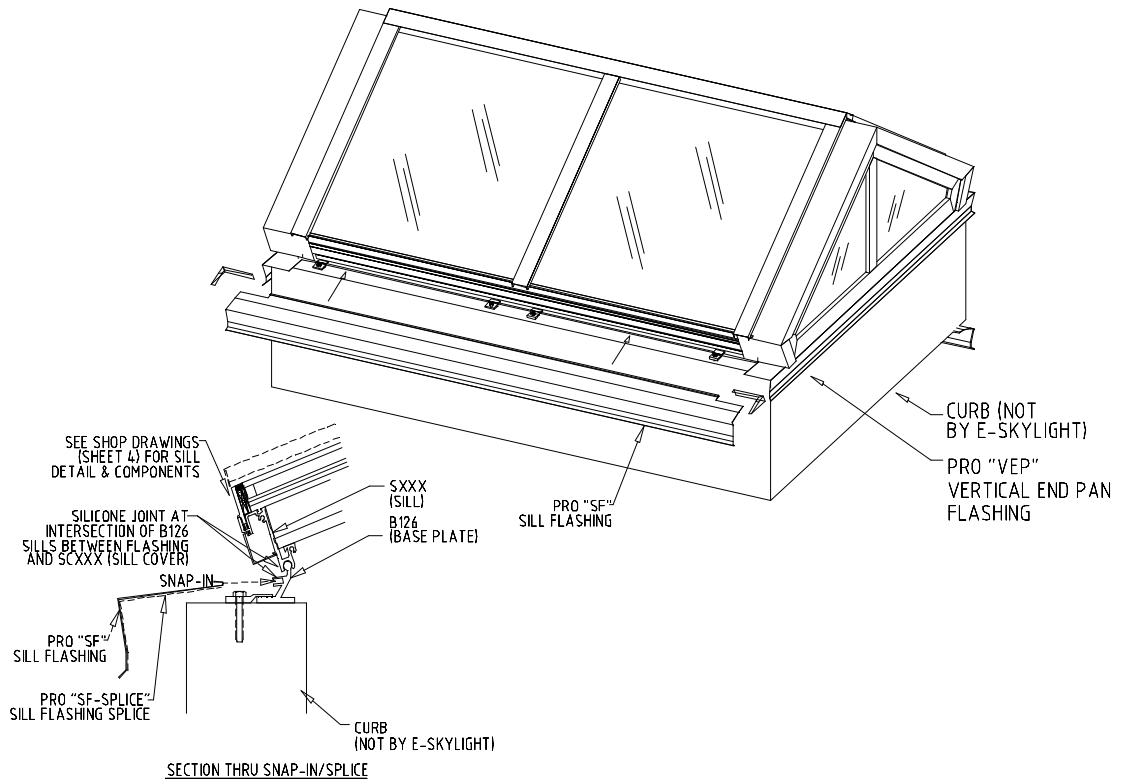


Diagram #5 –Sill Flashing

1. Snap-in sill flashing (Pro "SF") as shown on shop drawings (See Diagram #5).
2. Splice Pro "SF" (sill flashing) and Pro "VEP" (vertical end pan) flashing together using Pro "SF-Splice" (sill flashing splice) at corners. Use colored silicone (to match finish of skylight) at the final exposed joint between the metal flashing (See Diagram #6).

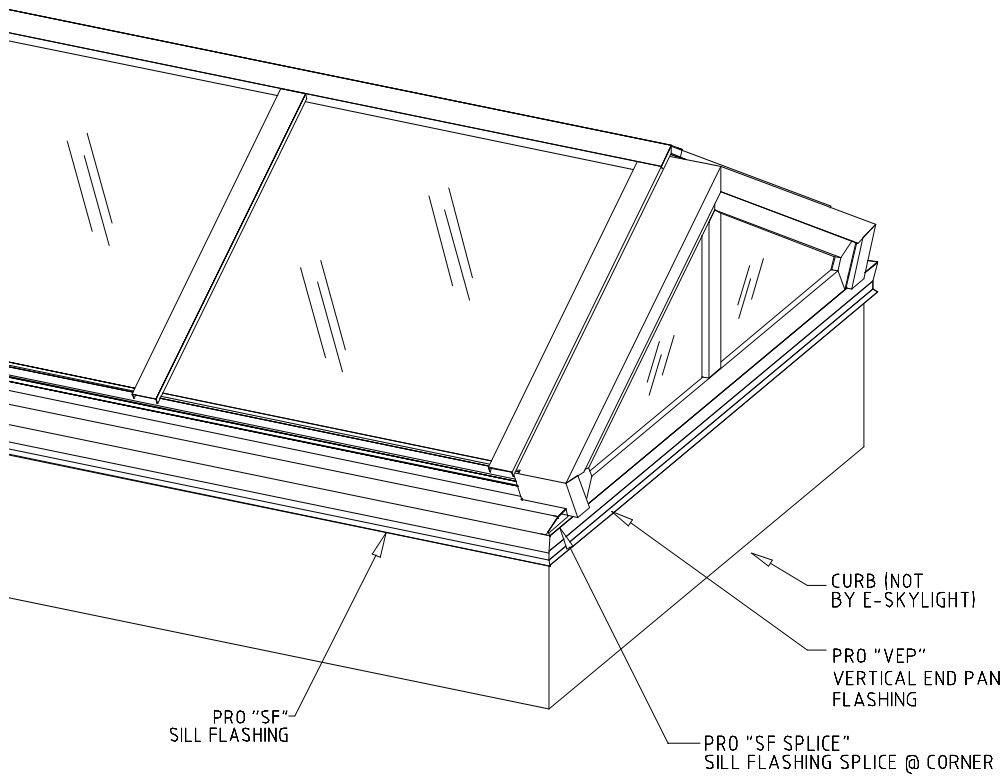


Diagram #6 – Corner Splice

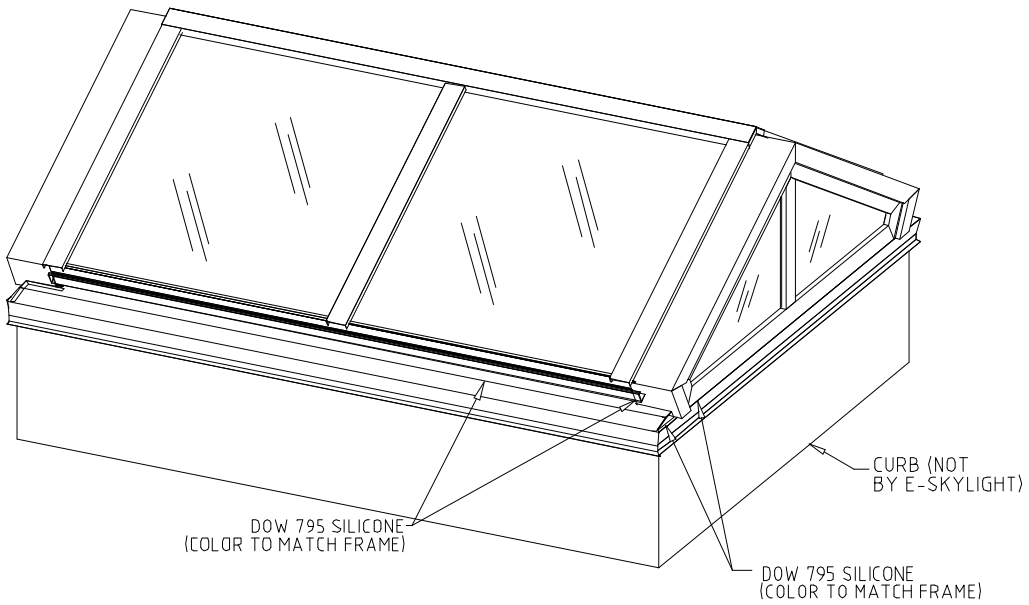
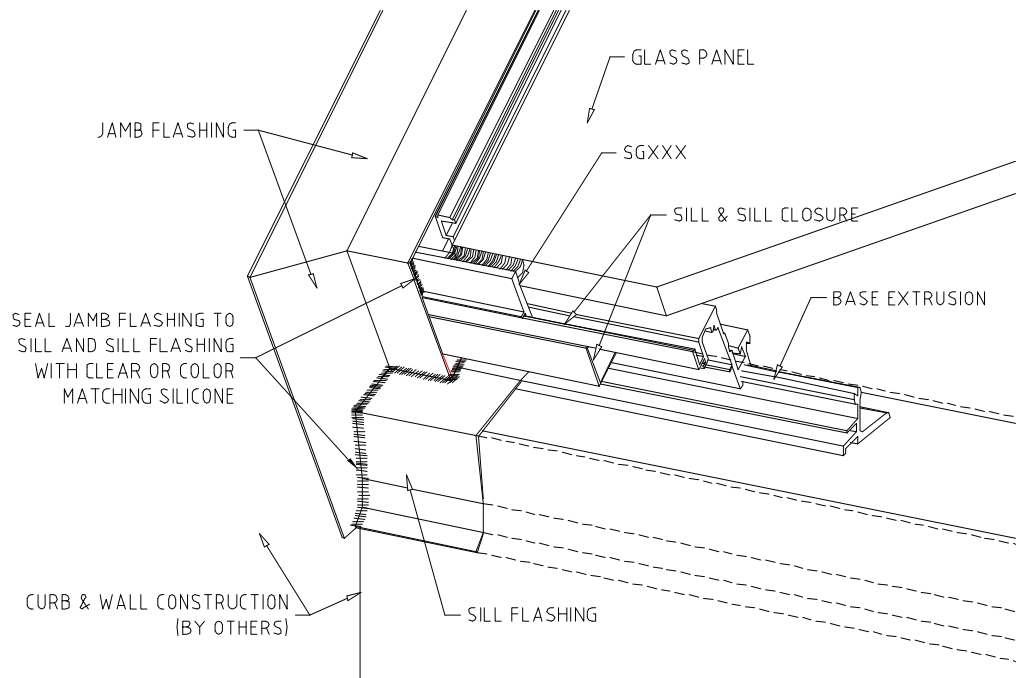
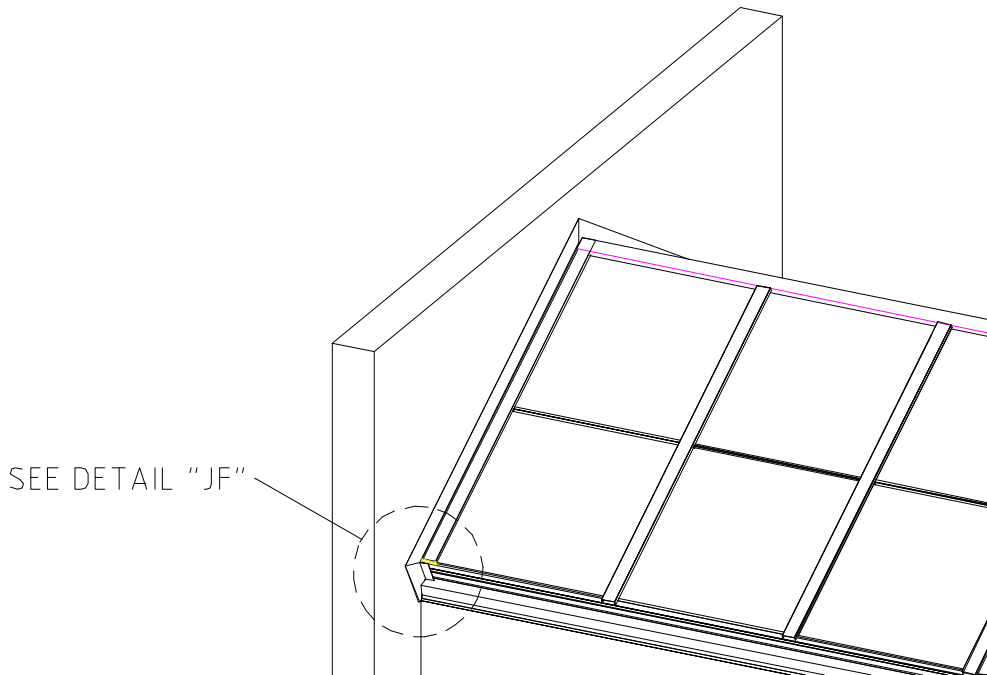


Diagram #7 – Finished Skylight

JAMB FLASHING CONDITION



Detail "JF"

For Jamb Conditions, please follow these important steps to insure weather seal.

1. After Glass installation and Sill Closure, install Jamb Flashing.
2. Install Jamb Rafter Cap and Closure.
3. Install Sill Flashing and butt against Jamb Flashing, seal as shown above.

LIST OF APPENDICIES

APPENDIX “A”

DOW CORNING 795
BUILDING SEALANT

APPENDIX “B”

CLEANING AND
MAINTENANCE GUIDE